



BENJAMIN entsteht 2018 / 2019 in Bayern

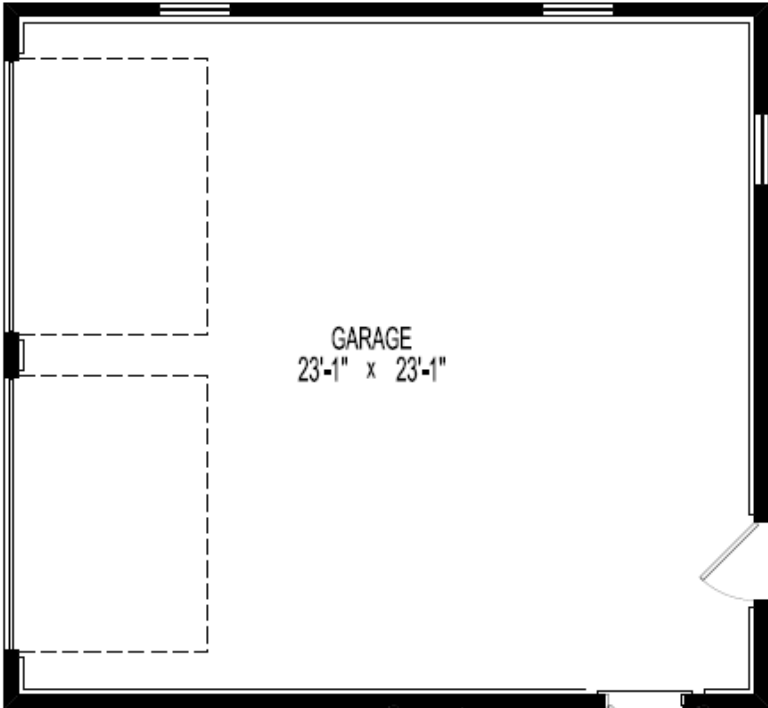
Dt. Entwurfsplanung demnächst

Schlafzimmer	3
Badezimmer	2 ½
Gast / Office	1
Garagenplätze	2

Hausbreite  
Haustiefe  
Mit Porch [Veranda]  
Mit Deck [Terrasse]

EG	
OG	
Wohnfläche	<b>203</b>
Porch & Deck anteilig	---
Garage	54
All	<b><u>257</u></b>



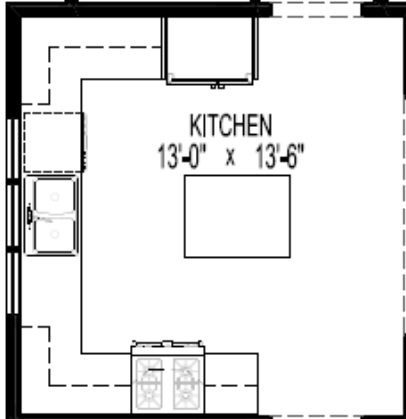


GARAGE  
23'-1" x 23'-1"

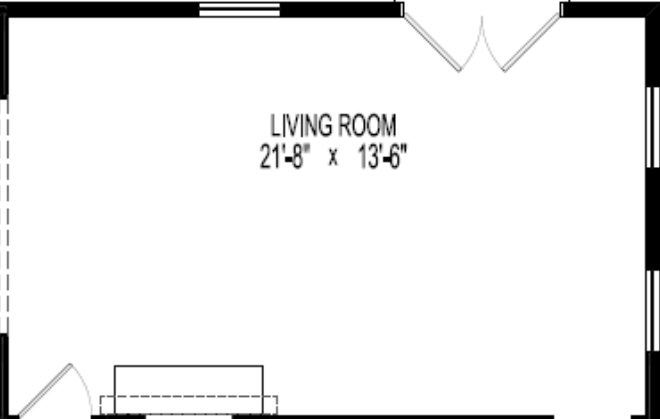


PDR

MUDROOM



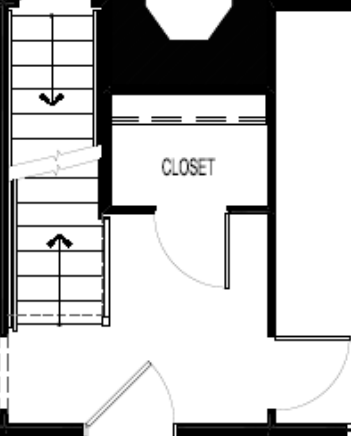
KITCHEN  
13'-0" x 13'-6"



LIVING ROOM  
21'-8" x 13'-6"

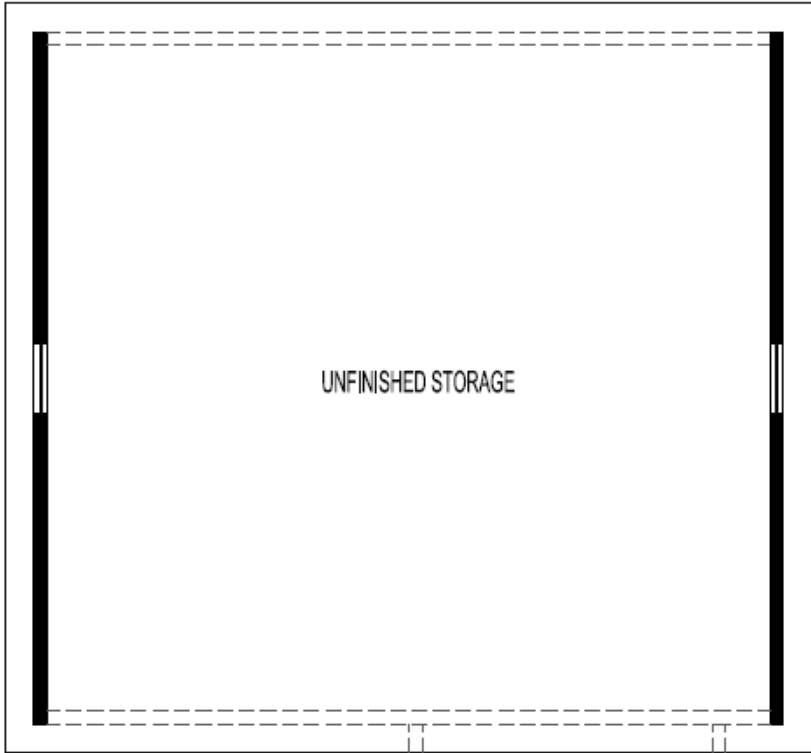


DINING ROOM  
13'-0" x 14'-0"

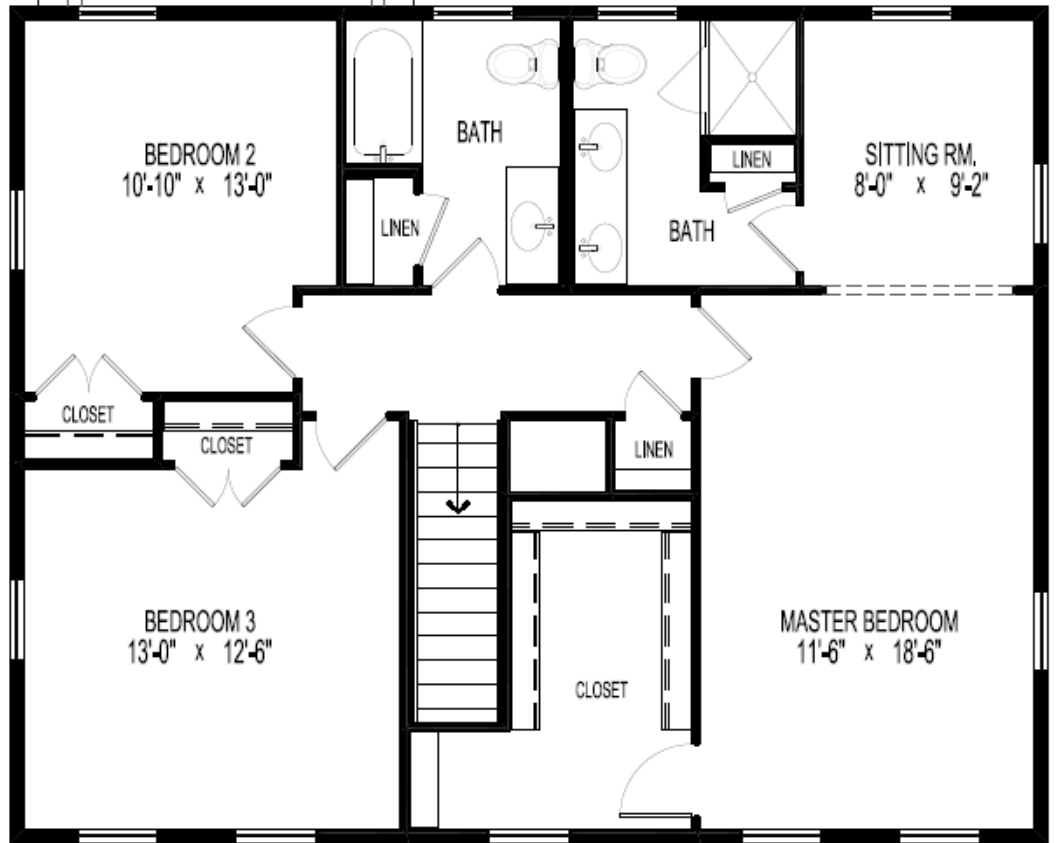


CLOSET

STUDY  
12'-6" x 14'-0"



UNFINISHED STORAGE



BEDROOM 2  
10'-10" x 13'-0"

BATH

SITTING RM.  
8'-0" x 9'-2"

CLOSET

CLOSET

LINEN

BATH

LINEN

LINEN

BEDROOM 3  
13'-0" x 12'-6"

MASTER BEDROOM  
11'-6" x 18'-6"

CLOSET

